

LEATHER AUXILIARIES

SINCAL MS

Best levelling agent for the dyeing
of all leather types



ZSCHIMMER & SCHWARZ

SINCAL MS

Best levelling agent for the dyeing of all leather types

SINCAL MS is a highly effective penetrating and levelling agent for the dyeing of all leather types. It disperses dyestuff molecules and reduces the absorptive behaviour of the dyestuffs.

Therefore the migration of the dyestuffs into the leather is accelerated and the levelness of the dyeing is substantially improved. When dyestuff mixtures are used, the shade of the colour will not be changed. Applying ammonia will in most cases become redundant when SINCAL MS is used, thus cutting the abundance of ammonium salts in the waste waters. Due to its good wetting and dispersing effects, SINCAL MS can also be used for the rewetting of wet-blue and crust leather.



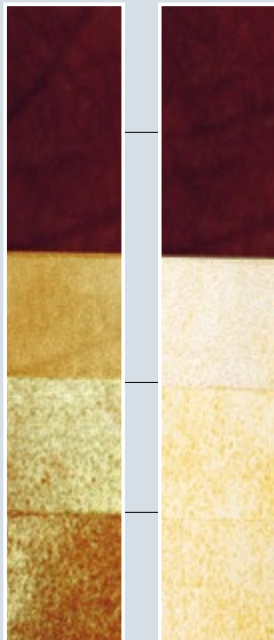
BENEFITS

- ▶ Excellent improvement of the levelness of the leather dyeing of double face and similar material
- ▶ Good wetting and dispersing effect
- ▶ Very well suited to wet back crusted material

ON SINGLE DYE

SINCAL MS

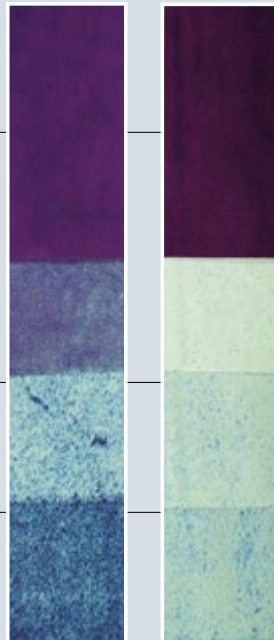
without auxiliary



ON DYESTUFF MIXTURE

SINCAL MS

without auxiliary



grain layer

middle split

flesh side

QUANTITIES FOR EACH TRIAL ON SHAVED WEIGHT

neutralization pH: 4.8/5.0

1 % SINCAL MS ▶ 5 minutes

+ 2.5 % anionic dyestuff ▶ 40 minutes

+ x % formic acid ▶ 20 minutes

The pictures demonstrate the convincing effect of SINCAL MS. Leather was dyed under the same conditions with and without SINCAL MS. The cross section analysis clearly shows a more regular and deeper dye penetration when SINCAL MS is applied.

Zschimmer & Schwarz

GmbH & Co KG | Chemische Fabriken
Max-Schwarz-Straße 3-5
56112 Lahnstein | DE
T +49 2621 12-173 | F +49 2621 12-526
leather@zschimmer-schwarz.com
zschimmer-schwarz.com